

# Agenda

## Environmental Concerns Committee

City of Kalamazoo



Wednesday, March 18, 2026

4:30 PM

City Commission Chambers – 241 West South Street

**A. CALL TO ORDER/ROLL CALL**

**B. ADOPTION OF AGENDA**

**(Action: Motion to approve the agenda)**

**C. APPROVAL OF MINUTES**

1. Approval of the minutes from the Environmental Concerns Committee meeting on February 18th, 2026 **(Action: Motion to approve)**

**D. COMMUNICATIONS**

**E. PUBLIC COMMENTS**

**F. REPORTS**

1. Natural Features Protection Review Board
2. Air and Water Quality Report
3. Wildlife and Natural Resource Protection
4. Planning Commission
5. Tree Committee
6. Asylum Lake Policy & Management Council
7. Parks and Recreation Advisory Board
8. Kalamazoo River Watershed Council
9. Odor Task Force

10. Waste Working Group

11. Native Species & Urban Landscape

**G. UNFINISHED BUSINESS**

1. NFP Property Discussion.
2. Green space preservation and City decision-making discussion
3. City Sustainability Report

**H. NEW BUSINESS**

1. Discuss the impacts of fire at a local metal recycler.

**I. PUBLIC COMMENTS**

**J. COMMISSIONER COMMENTS**

**K. ADJOURNMENT**

### ADDITIONAL INFORMATION

Get news, information, and alerts from the City of Kalamazoo. Sign up at [www.kalamazoocity.org/connect](http://www.kalamazoocity.org/connect), follow @KalamazooCity on Twitter, and search for The City of Kalamazoo on Facebook.

Agendas for the regular meetings of the Kalamazoo City Environmental Concerns Committee are available on the Internet at: [www.kalamazoocity.org](http://www.kalamazoocity.org). You may also use the QR Code below to access agendas and agenda packets.



**QR Code to Access the Agenda & Agenda Packet** Use the camera on your phone or mobile device to scan the QR Code and then follow the instructions that appear on your screen.

The link will take you to <https://kalamazoomi.portal.civicclerk.com/> where you can view the meeting agendas and agenda packets.

The Kalamazoo City's Environmental Concerns Committee meetings are held on the third Wednesday of each month at 4:30 p.m. in the City Commission Chambers at City Hall. These meetings are streamed live on the Public Media Network (channel 190 for Charter customers, channel 99 for U-Verse customers) and on the City's [Facebook page](#) and [YouTube Channel](#).

**Public Comments at this meeting may either be made in person or by calling 1-888-382-9556 during the Public Comment periods.**



# Committee of the Whole

February 16, 2026





# Community Sustainability Plan Update

01

Understanding Progress to Net-Zero

02

Report on Volume of Recycling and Composting Programs

# Why we're here

- To inform the City Commission on the City of Kalamazoo's Sustainability Plan and the actions undertaken to achieve the goals laid out in the plan.
- To inform the City Commission on greenhouse gas emissions by the City of Kalamazoo and progress to net-zero.

# Agenda

- Updates on City's sustainability initiatives from 2025.
- Comparison of 2024's greenhouse gas numbers.
- Overview of recycling and composting programs.

# Background

- 2019- The **City Commission** declared a climate emergency
- 2022- **Community Sustainability Plan** was adopted.
- 2023- **Sustainability Planner** hired and baseline greenhouse gas report released.
- 2024- **City of Kalamazoo** enrolled in Consumers Energy Large User Renewable Program.

## CITY OF KALAMAZOO, MICHIGAN

### RESOLUTION NO. 19-59

#### A RESOLUTION TO DECLARE A CLIMATE EMERGENCY

Minutes of a regular meeting of the City Commission of the City held on October 21, 2019, at 7:00 o'clock p.m., local time, at the City Hall.

**PRESENT**, Commissioners: Anderson, Cooney, Cunningham, Griffin, Urban, Vice Mayor Knott, Mayor Hopewell

**ABSENT**, Commissioners: None

**WHEREAS**, the consensus conclusion of scientific and policy assessments from the Intergovernmental Panel on Climate Change (IPCC) calls for urgent and decisive actions by governments around the world to make "rapid, far-reaching and unprecedented changes in all aspects of society" in order to limit global warming to 1.5 degrees Celsius to avoid the most disastrous impacts; and

**WHEREAS**, the U.S. Fourth National Climate Assessment detailed the massive threat that climate change poses to the American economy and underscored the need for emergency climate action at all levels of government; and

**WHEREAS**, the 2019 Assessment of the Impacts of Climate Change on the Great Lakes highlights the significant impacts in our unique backyard. Here in Kalamazoo – and all over southwestern Michigan - we are increasingly experiencing the predicted impacts of climate change including flooding of streets and homes, power outages, and heat waves. Farmers cannot plant or delay planting due to flooded fields. Record low temperatures with snow and ice close schools and businesses. Moreover, these economic and environmental hardships disproportionately affect the most vulnerable citizens of Kalamazoo; and

**WHEREAS**, over 1,000 local governments in 18 countries have already signed emergency declarations; and

# Alignment with the Master Plan

## Strategic Vision Alignment

Strategic Vision Goals	SP	CC	IPP	ER	SC	YD	CN	SD	EV	GG
	Shared Prosperity	Connected City	Inviting Public Places	Environmental Responsibility	Safe Community	Youth Development	Complete Neighborhoods	Strength Through Diversity	Economic Vitality	Good Governance
<b>Sustainability Strategy Sections</b>										
<b>Accessible Complete Network</b>										
Goal 1: Design a greener transportation network		•	•	•	•		•			
Goal 2: Increase density for safe, accessible, & equitable travel			•	•	•		•		•	
Goal 3: Make transit a more viable option for more trip types & users		•	•	•	•		•			
<b>Affordable Efficient City</b>										
Goal 4: Accelerate local renewable energy investments		•	•	•	•			•	•	•
Goal 5: Transform buildings & behavior to save energy and money		•		•	•			•	•	
Goal 6: Decrease emissions from City vehicles, equipment, & infrastructure			•	•	•					•
<b>Healthy Prepared Community</b>										
Goal 7: Protect the natural environment for urban resilience		•		•	•	•		•		•
Goal 8: Support a healthy & resilient community		•		•	•	•		•		•
<b>Green Circular Economy</b>										
Goal 9: Support systems for local food on multiple scales		•		•	•	•	•	•	•	
Goal 10: Reduce waste & support market for waste recovery		•	•		•	•			•	•

The matrix shows how the Community Sustainability Plan aligns with the City's Strategic Vision Goals.

# Structure of the Community Sustainability Plan

## Themes

### Goals

### Strategies

### Actions



## Accessible Connected Network

### GOALS

- Design a greener transportation network that easily and safely connects all users to places they need to go
- Strategically increase residential density to facilitate safe, accessible, and equitable travel
- Make transit a more viable option for more trip types and users



## Affordable Efficient City

### GOALS

- Accelerate local renewable energy investments
- Transform buildings and behavior to save energy and money
- Decrease emissions from City vehicles, equipment, and infrastructure assets



## Healthy Prepared Community

### GOALS

- Protect the natural environment for urban resilience
- Support a healthy and resilient community



## Green Circular Economy

### GOALS

- Support systems for local food production and distribution on multiple scales
- Reduce community waste & support market solutions for waste diversion and recovery

## Goal: Protect the natural environment for urban resilience

1. Held rain barrel and composter sale to encourage stewardship.
2. Offered input on the Kalamazoo River Urban Wildlife Corridor Project.
3. Dredging of Portage Creek in Milham Park to expand trout habitat.
4. Buzz in the Zoo program aims to increase private property ecosystem health.
5. Held invasive removal events at Woods Lake and Reed Street parks.
6. Created an iNaturalist Invasive species monitoring program.
7. Releaf in Oakwood neighborhood.
8. Updated approved tree planting guidelines.
9. Better management of city owned wellheads.

### Equitably Increase the Tree Canopy across the City

#### ACTIONS:

- Use the street tree inventory to update the City's forestry management plan
- Plant more trees community-wide and monitor canopy coverage
- Update City tree policies and zoning ordinance to promote 'right tree, right place' principles
- Promote better forestry on private property through stewardship & education (NFP Phase 3)

### Create Opportunities for People to Interact with Nature and Improve Biodiversity

#### ACTIONS:

- Manage City-owned natural areas for better ecosystem health
- Update zoning ordinance to support more biodiversity
- Increase job training and market opportunities for native landscaping
- Collaborate on environmental education and stewardship

### Design a built environment more integrated with wildlife

#### ACTIONS:

- Develop an inclusive process for the public to gain understanding on wildlife and ecosystem concerns
- Monitor wildlife-related data to understand risks and set action levels
- Partner to implement and advocate best practices for urban wildlife protection

### Collaborate regionally for better water quality in rivers, lakes, and streams

#### ACTIONS:

- Work with partners to implement watershed management plans, education plans, and best practices
- Prioritize local streams to support daylighting and riparian buffers
- Create a blue/green trail plan focused on equal access

1. Placed compost tumblers in community gardens at NACD, Parkview Hills, West Main Hill, and Edison.
2. Placed commercial compost bins in neighborhoods and at central site.
3. Expanded materials collected at EPS foam events. Over 1,000 visitors a year.

**Goal:** Reduce community waste & support market solutions for waste diversion and recovery

#### Expand community recycling

##### ACTIONS:

- Increase participation and volume of material collected in curbside recycling program
- Expand alternative recycling and reuse opportunities

#### Support new policies and market-based solutions for waste diversion and recovery

##### ACTIONS:

- Update zoning ordinance to allow small-scale composting in residential and commercial districts
- Work with partners to promote repair over replace
- Incubate inclusive opportunities for material supply chain and end markets

#### Work toward sustainable City facilities focused on resource recovery

##### ACTIONS:

- Build interdepartmental sustainability committee to review policies and operationalize green practices
- Complete waste stream audits for City departments
- Determine viability of biosolids management alternatives to increase resilience and control costs

1. Achieved SolSmart Bronze designation.
2. Held two Solarize events with GLREA. 14 residents added solar to their homes, producing 33 kw.
3. City enrolled in Consumers Energy Large Scale User program.

**Goal:** Accelerate local renewable energy investments

Remove barriers and develop tools that lead to more solar deployment

**ACTIONS:**

- Convene an internal team to evaluate, amend, and test codes and ordinances to create a streamlined development and permitting process (e.g., SolSmart)
- Convene an inclusive solar accelerator committee to develop decision-support tools (e.g., suitability assessment, map guides)

Create partnerships to offer LMI-specific incentives for equitable solar deployment

**ACTIONS:**

- Actively participate in the EWR low-income workgroup and create local and regional partnerships
- Leverage funding sources to create a framework for solar deployment in LMI households

Pilot a community solar project

**ACTIONS:**

- Develop a community solar project as a local model to address energy equity and affordability
- Join peer communities in Michigan to advocate for state policy that advances community solar and energy equity

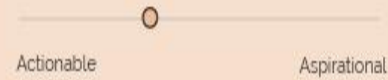
- 1. Public Safety Station number 2 is LEED Certified.
- 2. Improving and expanding recycling at City facilities.

### Retrofit and weatherize existing buildings to reduce energy waste

**ACTIONS:**

- Create a robust green affordable housing initiative)
- Improve commercial building performance through energy benchmarking and labeling programs
- Benchmark City buildings and develop an energy management plan

**FEASIBILITY:** Priority to Launch



**CITY ROLE:**

- Act**
- Connect
- Advocate

**TIMELINE:**

- Short
- Mid**
- Long
- Extended

**COST:** \$ \$ \$ \$ \$

### Electrify new and existing buildings

**ACTIONS:**

- Promote all-electric incentives for new construction, leading with City-supported projects
- Pair electrification with rooftop PV
- Advocate for better state building codes for energy and educate the community about electrification

**FEASIBILITY:** Opportunistic



**CITY ROLE:**

- Act
- Connect**
- Advocate

**TIMELINE:**

- Short
- Mid**
- Long
- Extended

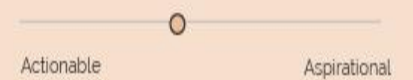
**COST:** \$ \$ \$ \$ \$

### Encourage less energy use during peak demand periods

**ACTIONS:**

- Continue to implement the City's wastewater treatment plant demand response plan
- Encourage energy awareness and waste reduction in City offices and facilities

**FEASIBILITY:** Priority to Launch



**CITY ROLE:**

- Act
- Connect
- Advocate**

**TIMELINE:**

- Short
- Mid**
- Long
- Extended

**COST:** \$ \$ \$ \$ \$

## Key Performance Indicators for Success

Key Performance Indicator	Current Condition	Desired Trend for Target (2032)
<b>Accessible Complete Network</b>		
KPI 1 - Number of active transportation miles completed	In-Progress*	Trend-up
KPI 2 - Number and distribution of public EV charging stations	111	Increase by 100%
<b>Affordable Efficient City</b>		
KPI 3 - Percentage of households who use electric space heating	20%	40%
KPI 4 - Number of City-supported net zero energy projects completed	0	200
KPI 5 - Number of solar PV array projects approved	In-Progress*	Trend-Up
KPI 6 - Number of EVs in the City Fleet	0	100
<b>Healthy Prepared Community</b>		
KPI 7 - Number of new street trees planted	500	3,000
KPI 8 - Percentage of identified non-copper (lead) supply lines replaced in the drinking water system	25%	75%
<b>Green Circular Economy</b>		
KPI 9 - Number of residents participating in City-supported local food programs	100	2,000
KPI 10 - Amount of materials recycled through curbside program	2,215 tons annually	2,500 tons annually

\*In-Progress - Inventory of current condition in-progress

Active Transportation  
Numbers are  
Increasing.  
KPI #1.

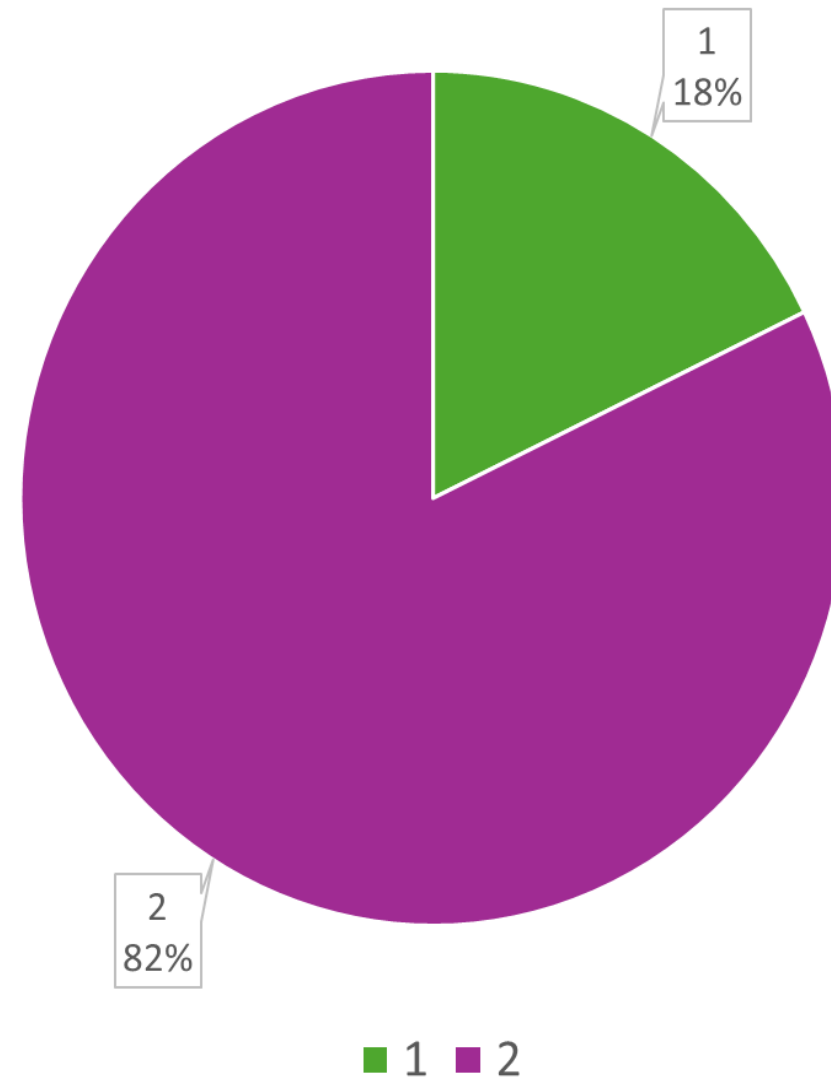
Automobiles				
	Total Trips	Total Distance (km)	Trips % Change	Distance % Change
2018	90,400,000	815,000,000	0	0%
2019	95,400,000	801,000,000	5.53%	-2%
2020	79,200,000	581,000,000	-16.98%	-27%
2021	94,300,000	734,000,000	19.07%	26%
2022	95,700,000	775,000,000	1.48%	6%
2023	94,900,000	778,000,000	-0.84%	0%
<b>Total</b>	<b>549,900,000.00</b>	<b>4,484,000,000.00</b>		
On Foot				
	Total Trips	Total Distance (km)	Trips % Change	Distance % Change
2018	11,300,000	7,950,000	0%	0%
2019	11,100,000	7,800,000	-2%	-2%
2020	5,670,000	5,190,000	-49%	-33%
2021	5,670,000	5,150,000	0%	-1%
2022	6,110,000	5,890,000	8%	14%
2023	6,460,000	6,150,000	6%	4%
<b>Total</b>	<b>46,310,000.00</b>	<b>38,130,000.00</b>		
Cycling				
	Total Trips	Total Distance (km)	Trips % Change	Distance % Change
2018	583,000	1,370,000	0%	0%
2019	584,000	1,270,000	0%	-7%
2020	No Data	No Data		
2021	No Data	No Data		
2022	630,000	1,570,000	8%	24%
2023	681,000	1,640,000	8%	4%
<b>Total</b>	<b>2,478,000</b>	<b>5,850,000</b>		

# Progress to net-zero

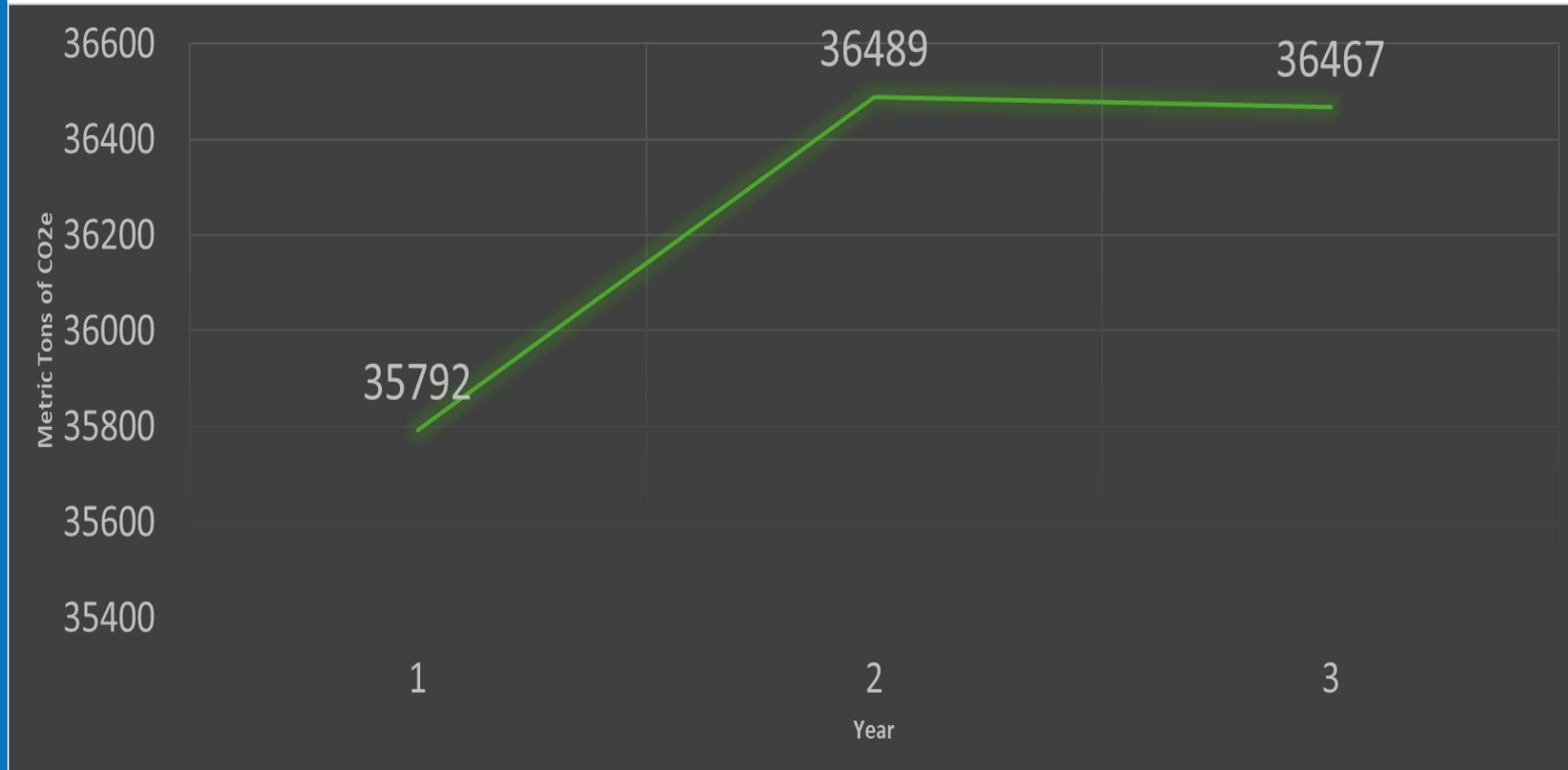
- Information here intended to help guide City Commission as they make budgetary and infrastructure decisions for the City of Kalamazoo.
- Brief recommendations to continue progress to net-zero

# A Matter of Scope

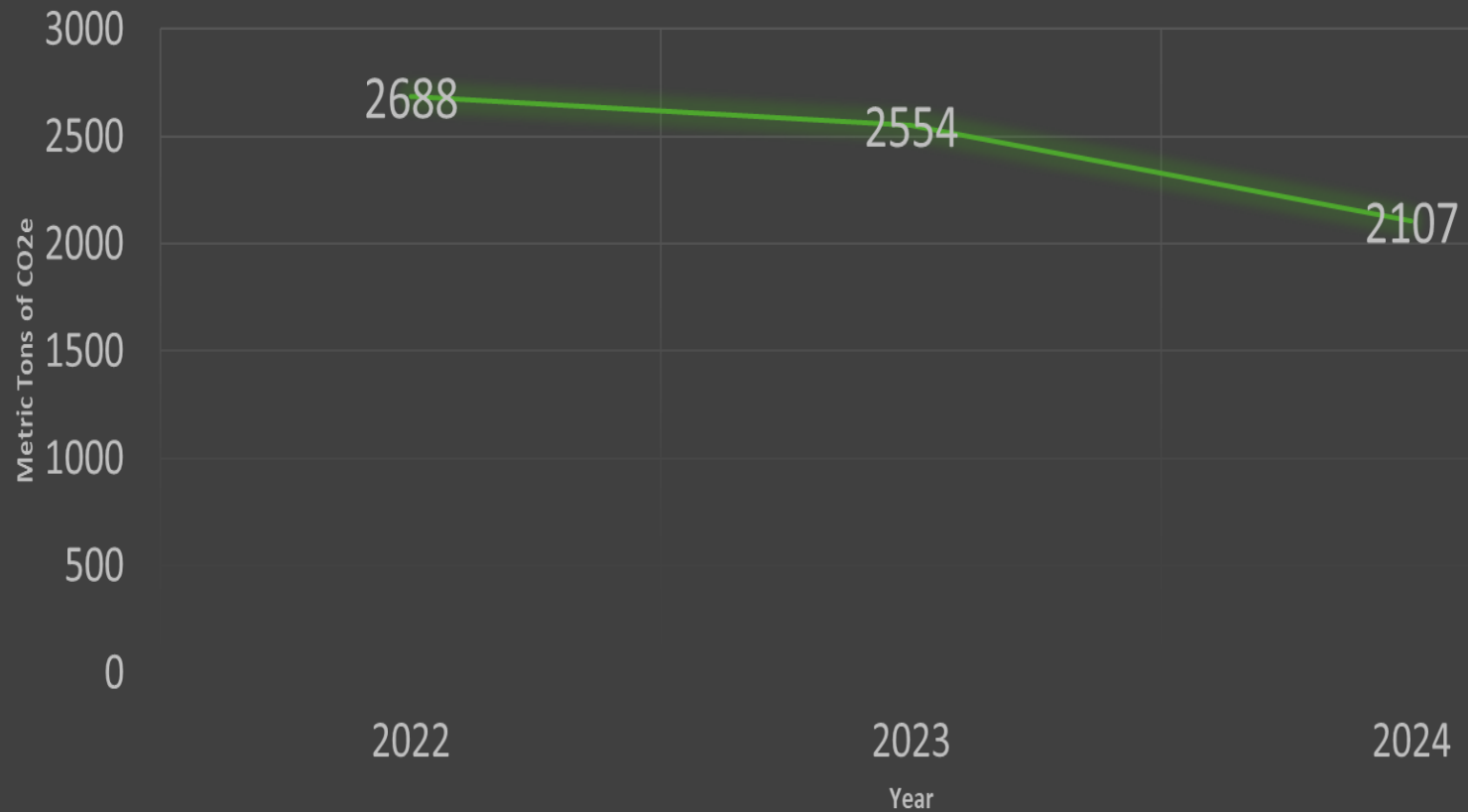
Greenhouse gas accounting is divided into three scopes.



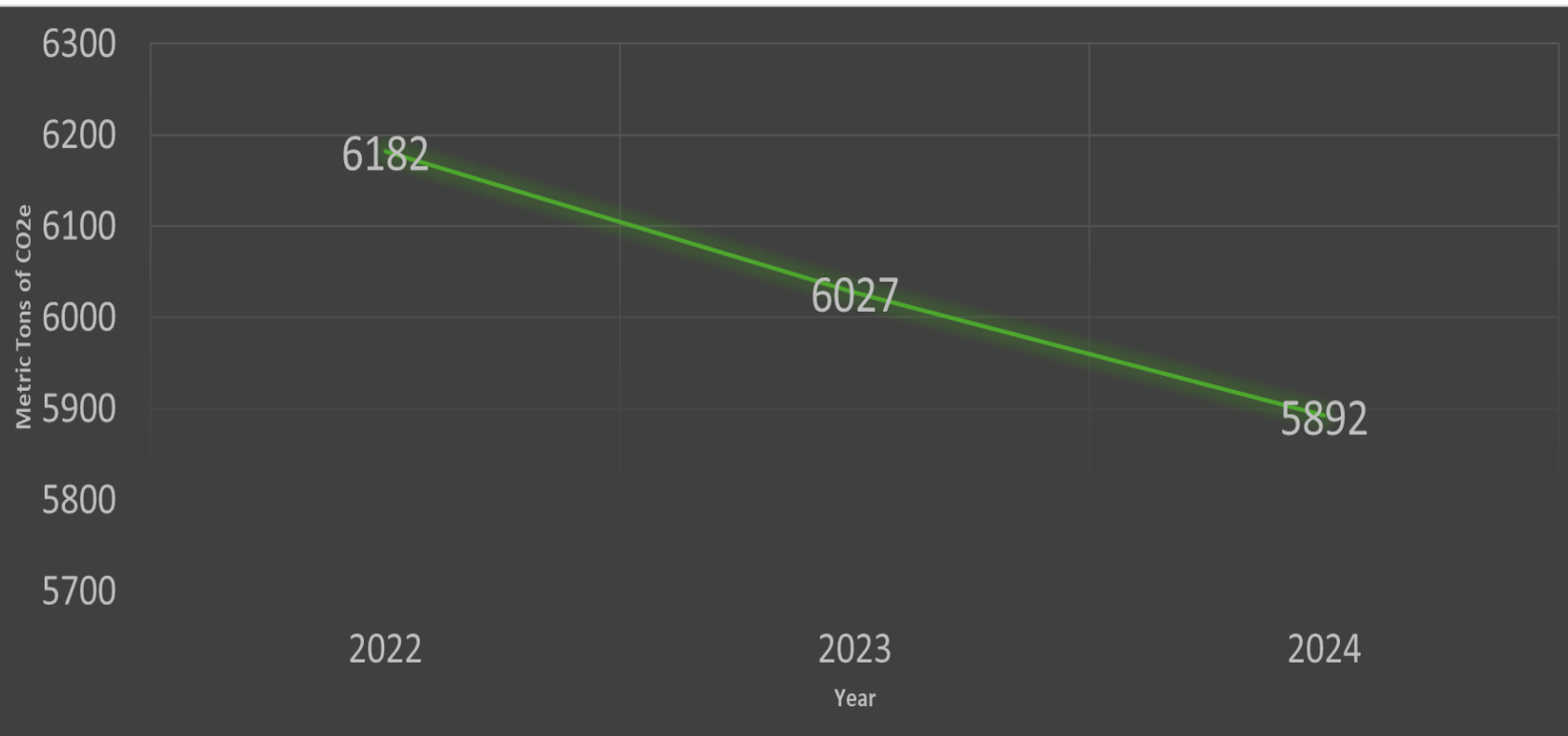
# Total Metric Tons of CO2e for Scopes 1 and 2.



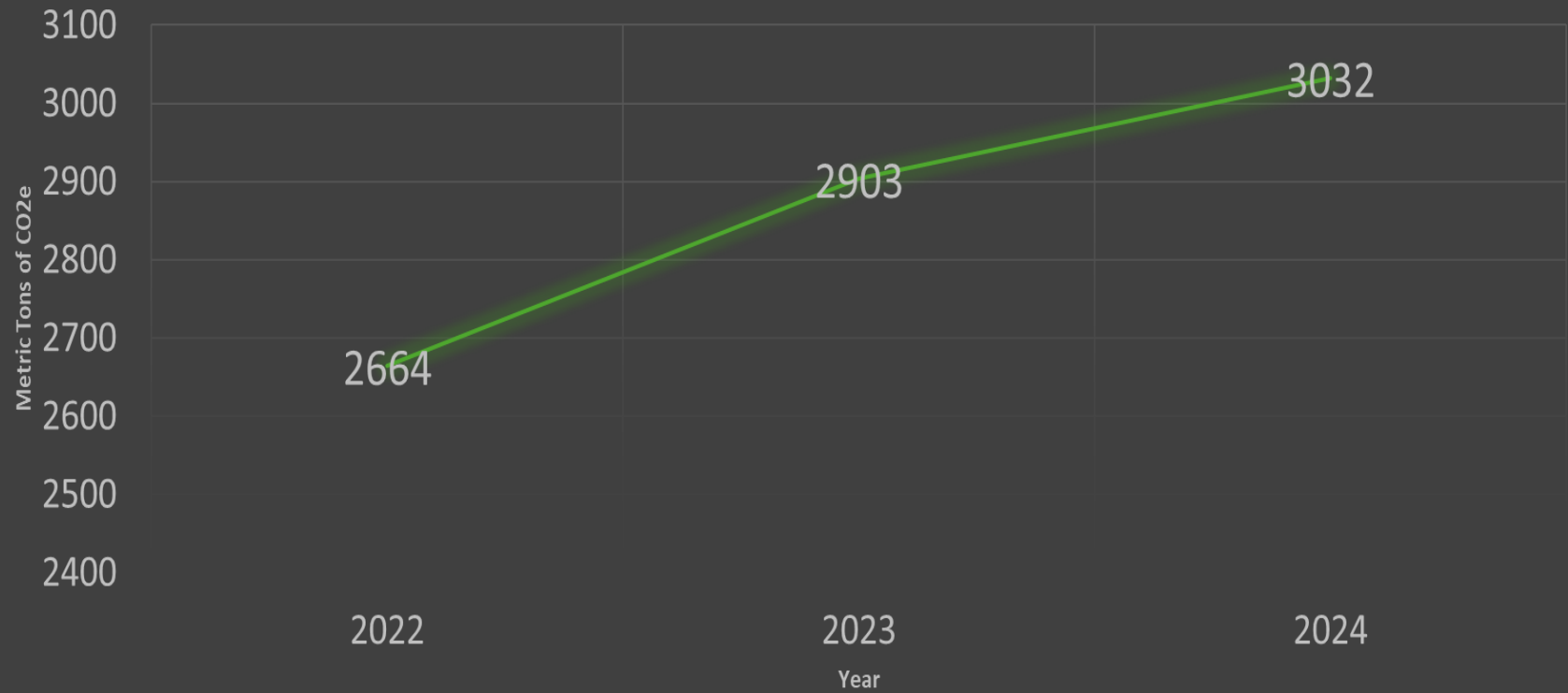
# Street Lights and Traffic Signals



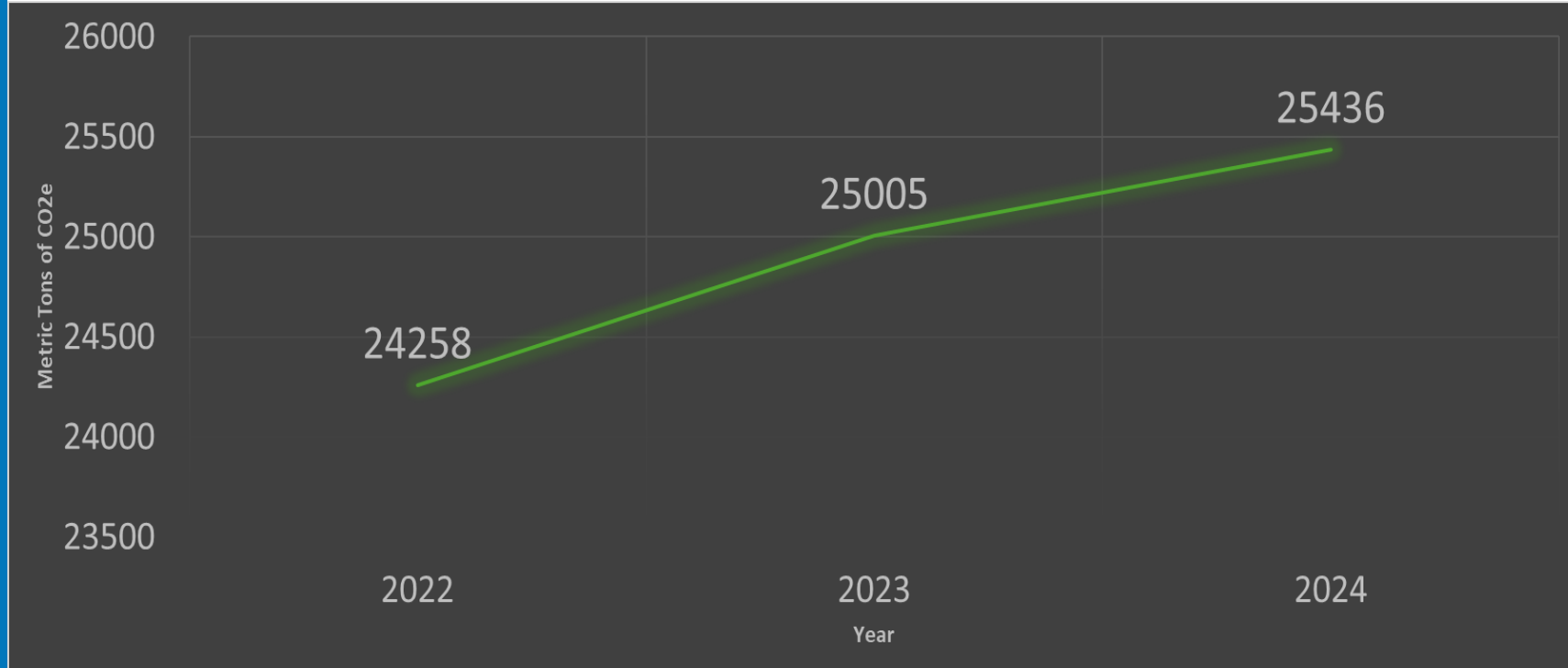
# Buildings and Facilities



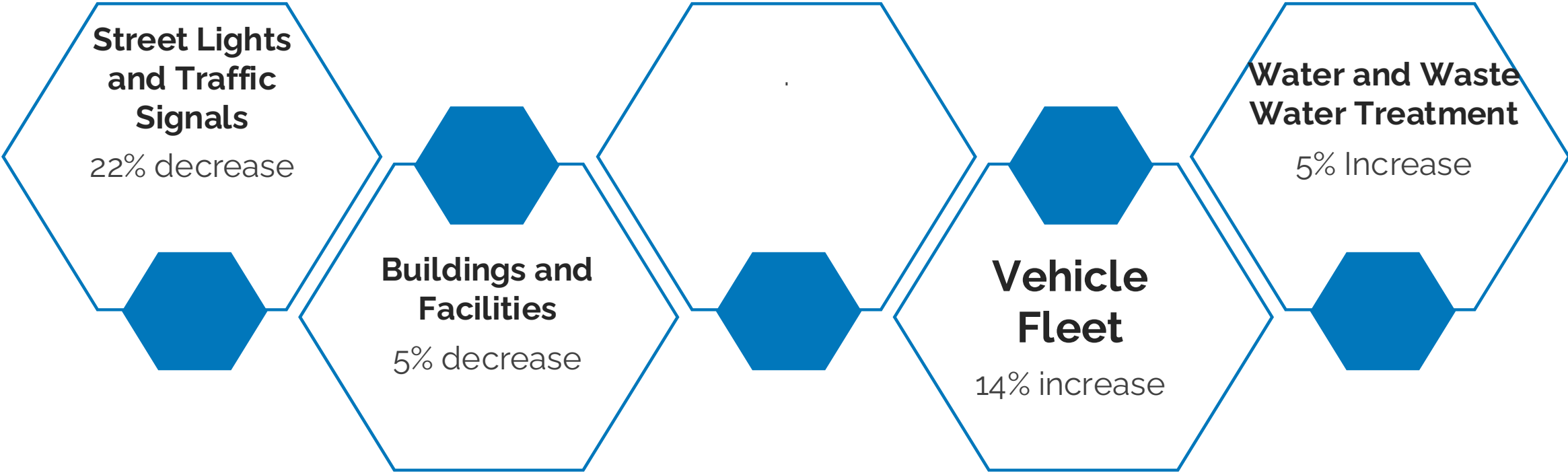
# Vehicle Fleet



# Water and Waste Wastewater Treatment



# Percent Change from 2022-2024

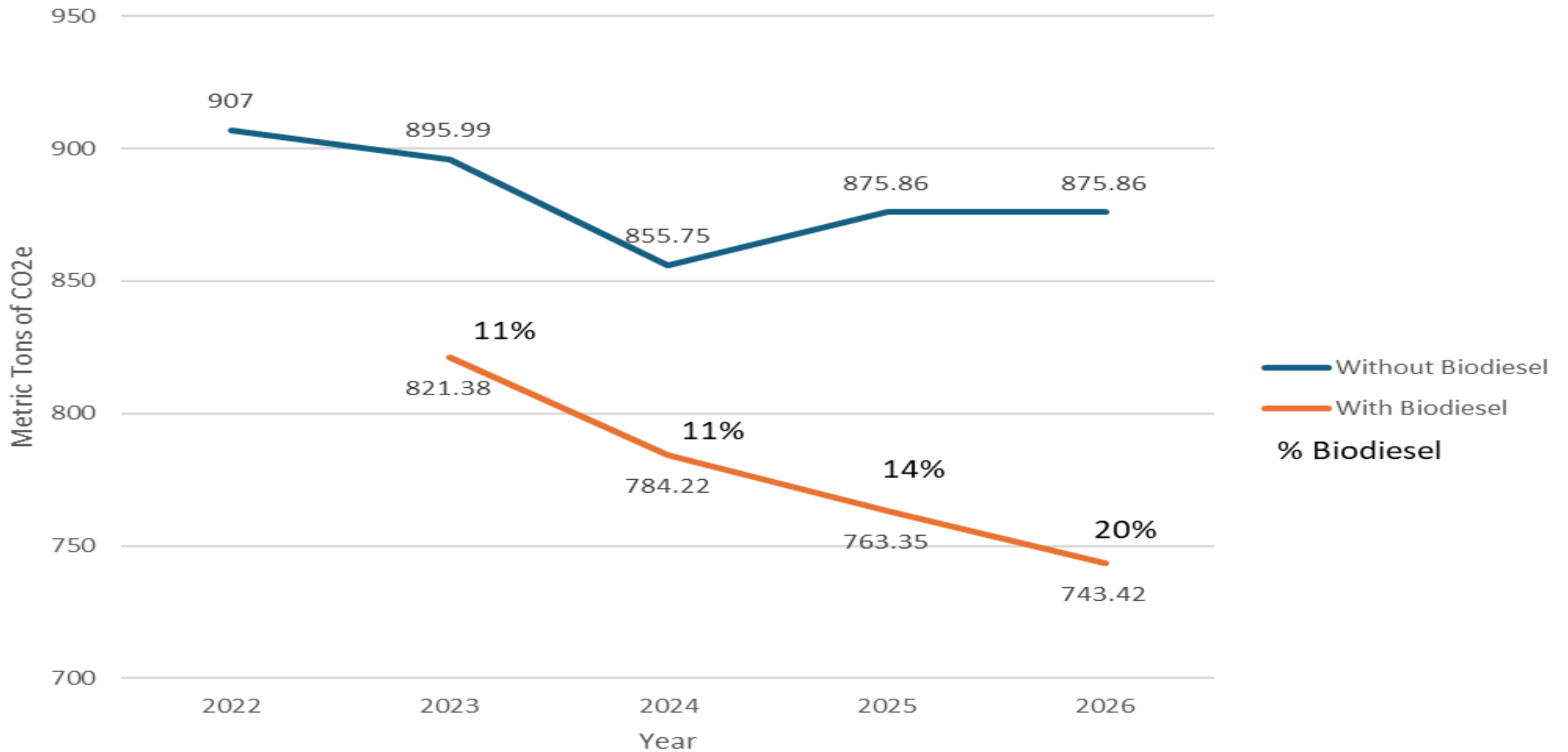


# Biodiesel

- Switch to Biodiesel 11 saved 277 metric tons of CO<sub>2</sub>e in 2024.
- This is equivalent to planting 4,580 trees with a growth of ten years.



## Comparison of Diesel and Biodiesel Use in Municipal Vehicles.



# Gasoline Use Emissions

- Emissions related to gasoline use increased 19% from 2022-2024.
- City staff are driving more miles, providing more service.

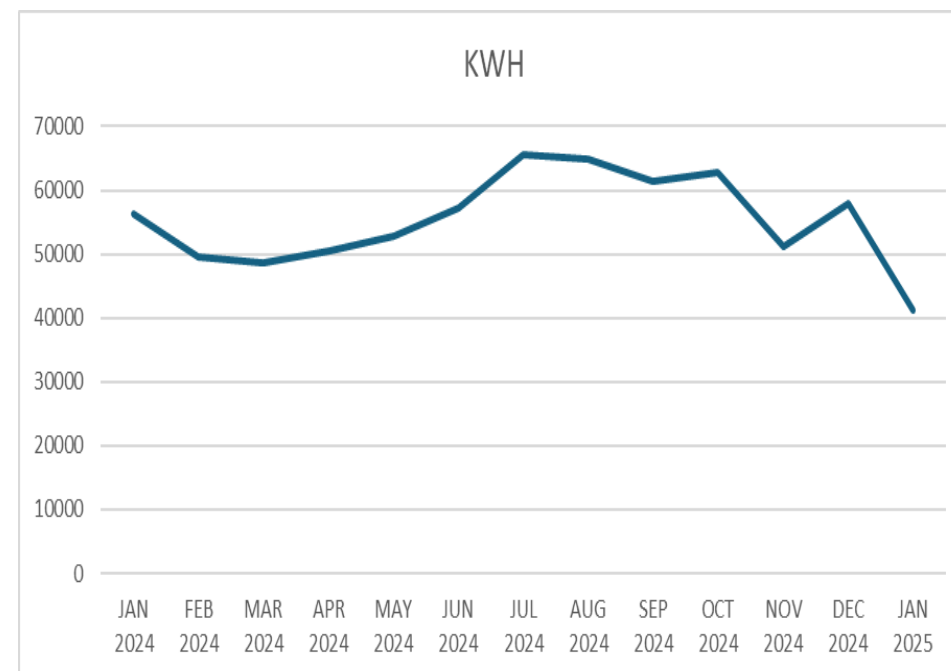
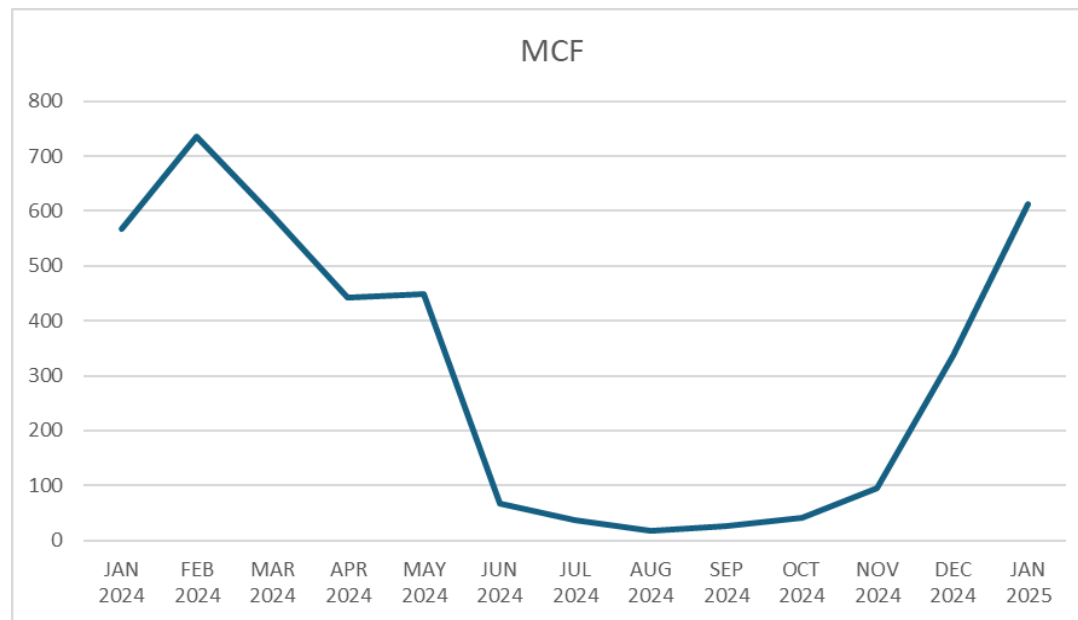


# Building Emissions

- Decline related to buildings no longer under the City's purview.
- Electricity used at City Hall increased 24% from 2022 to 2024.
- Gas used at City Hall decreased 8% from 2022 to 2024.



# Annual natural gas and electricity used in City Hall.



# Looking to the Future

2028



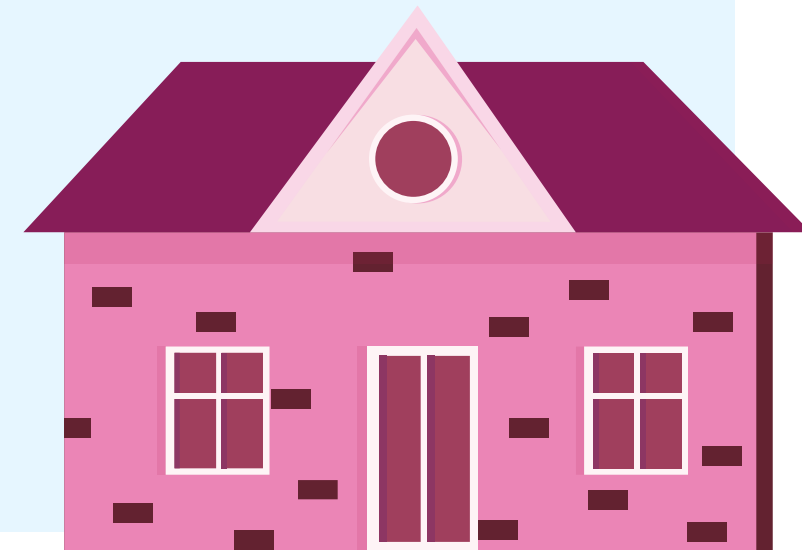
In 2024 the City enrolled in Consumers Energy Renewable program.

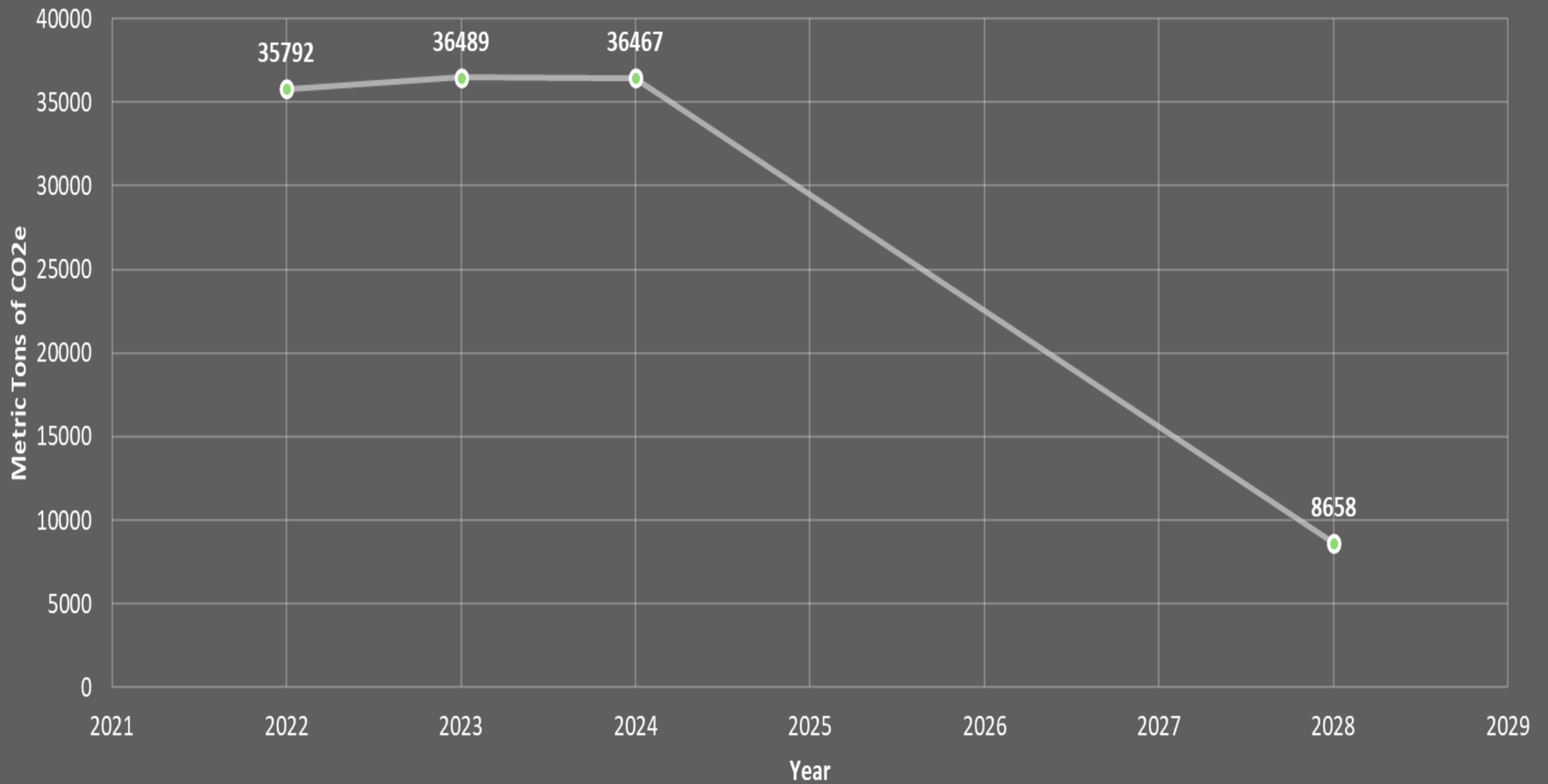


Starting in 2028 approximately 48 million kWh used by the City will come from wind and solar.



Enrollment in this program will offset 27,809 metric tons of CO<sub>2</sub>e. This accounts for 76% of our total emissions. Focus on efficient will increase the impact of enrollment.





# Considerations

---



## Cost

\$5-6 million dollars spent annually on utilities.

## Improvement

**S**

Replacing old equipment improves efficiency.

## Decarbonize

Sidewalk heating is the largest user of natural gas.

## Efficiency

Only one municipal LEED building.

1.

## **Continue Biodiesel Program**

Increasing percentage of "bio" in biodiesel will improve these numbers. Combustion of biodiesel also results in less particulate matter and other pollutants

2.

## **Purchase Electric Vehicles**

Switching to electric vehicles would increase Scope 2 emissions but decrease total emissions. Gasoline emissions rose 19% from 22-23, 9% from 23-24.

3.

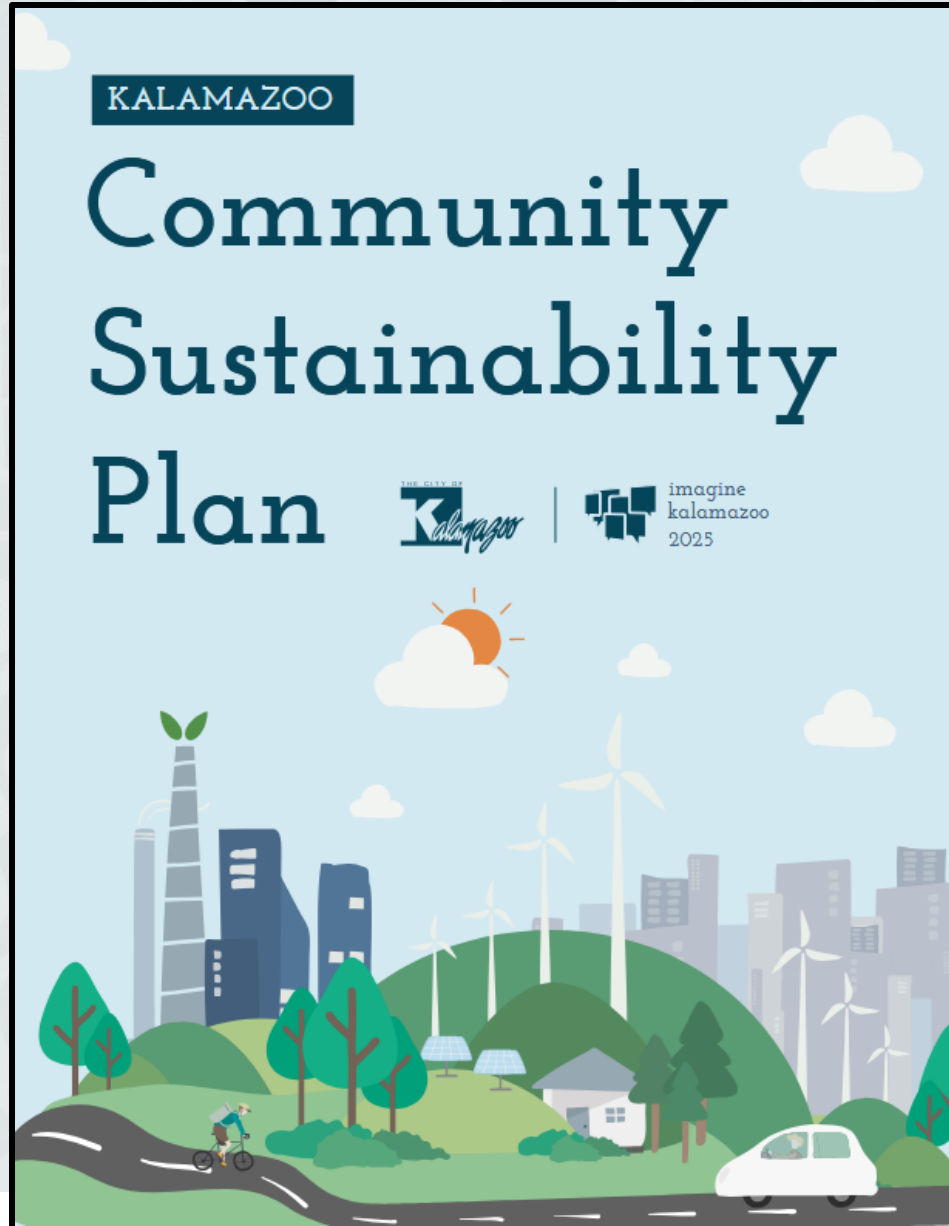
## **Improve Building Efficiency.**

Declines in this category were related to buildings no longer under the City's purview. Electricity used at City Hall increased 24% from 22-24. Gas use decreased 8% from 22-24.

# City Commission adopted on June 21, 2022:

## GOALS:

- Reduce community waste
- Support market solutions for waste diversion & recovery



### STRATEGY: Expand community recycling

Increase participation and volume of material collected in curbside recycling program

Expand alternative recycling and reuse opportunities

### STRATEGY: Support new policies and market-based solutions for waste diversion and recovery

Update zoning ordinance to allow small-scale composting in residential and commercial districts

Work with partners to promote repair over replace

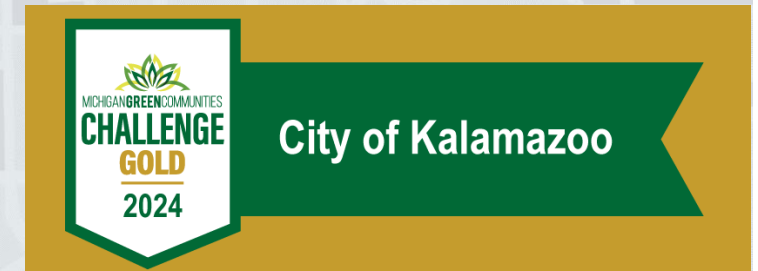
Incubate inclusive opportunities for material supply chain and end markets

### STRATEGY: Work toward sustainable City facilities focused on resource recovery

Build interdepartmental sustainability committee to review policies and operationalize green practices

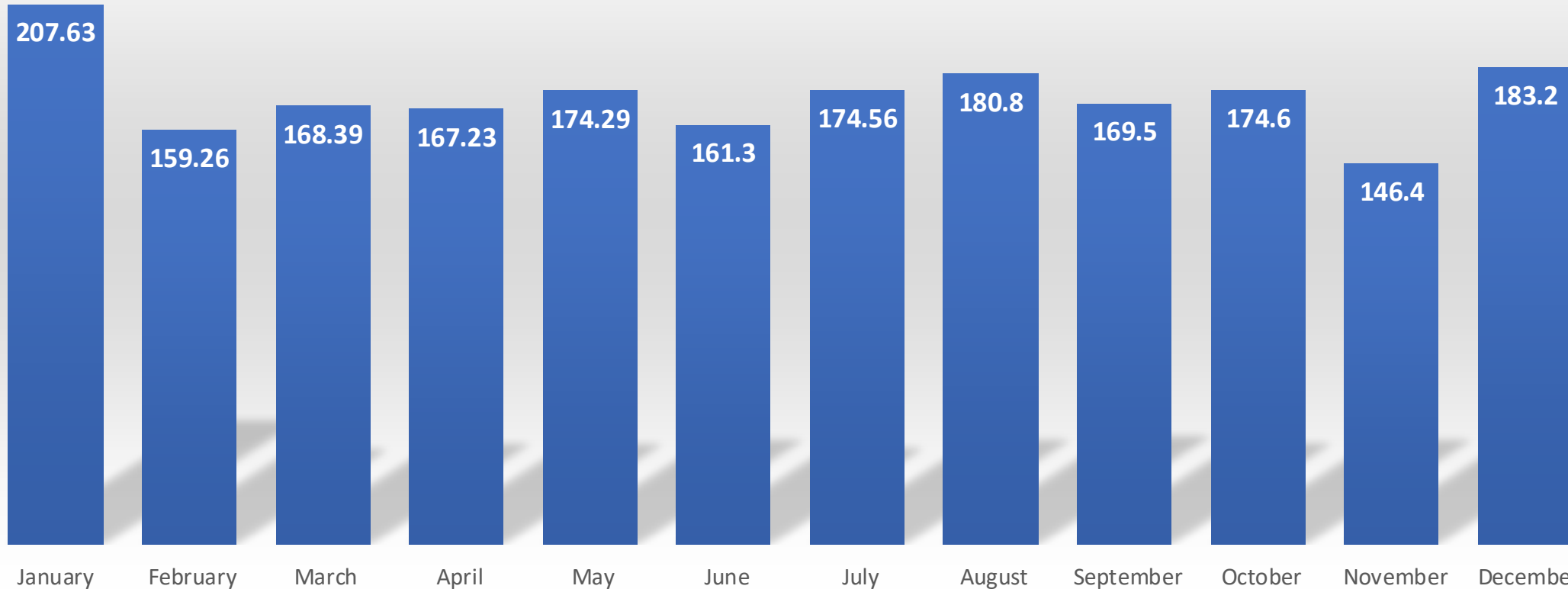
Complete waste stream audits for City departments

Determine viability of biosolids management alternatives to increase resilience and control costs



# Curbside Recycling Program Single Family & Multi Unit Residences

Single Stream Recycling Tons by Month



**2,067.16**  
 Total in  
 2025

**Decreased  
 Contamination  
 54%**



# Curbside Recycling Program Single Family & Multi Unit Residences

**THANK YOU FOR RECYCLING THESE IN YOUR CART:**  
**GRACIAS POR RECICLAR ESTOS MATERIALES EN SU CARRITO:**

<b>Paper</b>	<b>Cardboard</b>	<b>Metal</b>	<b>Plastic</b>	<b>Glass</b>
<b>Paper, Cups, and Cartons</b> <i>Papel, vasos de papel y envases de cartón</i>	<b>Cardboard and Boxboard</b> <i>(empty and flatten) Cartón (vacío y aplastado)</i>	<b>Aluminum and Metal Cans</b> <i>(empty and rinse) Latas de aluminio y metal (vacías y enjuagadas)</i>	<b>Plastic Bottles, Tubs, and Containers</b> <i>(empty, rinse and replace cap) Botellas, tinas y recipientes de plástico (vacío, enjuague y reemplace la tapa)</i>	<b>Glass Bottles and Jars</b> <i>(empty and dry) Botellas y frascos de vidrio (vacíos y secos)</i>

**NO!**

<b>No Not Bag Recyclables</b> <i>(no garbage) No coloque los materiales reciclables en bolsas (no recicle la basura)</i>	<b>No Plastic Bags or Plastic Wrap</b> <i>(return to retail) No se aceptan bolsas de plástico ni envolturas de plástico (devuélvalas a la tienda)</i>	<b>No Tanglers, Cords, Hoses, or Chains</b> <i>No se reciclan enredadores, cables, mangueras o cadenas</i>	<b>YUCK! No Food or Liquid</b> <i>(empty and dry) No se reciclan alimentos ni líquidos (vacíe todos los recipientes)</i>	<b>No Styrofoam™</b> <i>(drop-off only) La espuma de poliestireno no se recicle (solo punto de entrega de materiales para reciclaje)</i>	<b>No Batteries or Electronics</b> <i>(drop-off only) No recicle baterías ni componentes electrónicos (solo en puntos de reciclaje)</i>
---	--	---	---	---	--

311 or 269-337-8000  
kalamazoo.city.org/recycle-it

**The Recycling Partnership**  
SOLVING FOR CIRCULARITY

**When we emptied your recycling into the truck—our team noticed these “NO” items in your cart.**  
**Cuando vaciamos su reciclaje en el camión, nuestro equipo notó algunos materiales que “NO” deberían estar en su contenedor.**

**OOPS!**  
PLEASE, KEEP THESE ITEMS OUT OF CURBSIDE RECYCLING:  
POR FAVOR, NO COLOQUE ESTOS MATERIALES EN SU CARRITO DE RECICLAJE:

<b>Do Not Bag Recyclables</b> <i>(no garbage) No coloque los materiales reciclables en bolsas (no recicle la basura)</i>	<b>No Plastic Bags or Plastic Wrap</b> <i>(return to retail) No se aceptan bolsas de plástico ni envolturas de plástico (devuélvalas a la tienda)</i>	<b>No Tanglers, Cords, Hoses, or Chains</b> <i>No se reciclan enredadores, cables, mangueras o cadenas</i>
<b>No Yard Waste</b> <i>No recicle residuos de jardinería</i>	<b>No Styrofoam™ or EPS foam</b> <i>(drop-off only) La espuma de poliestireno no se recicle (solo en puntos de reciclaje)</i>	<b>No Batteries or Electronics</b> <i>(drop-off only) No recicle baterías ni componentes electrónicos (solo en puntos de reciclaje)</i>

All data is stored securely and safely within the country of origin and never sold or shared with third parties. Information is used solely to provide feedback and strengthen our community's recycling program.

311 or 269-337-8000  
kalamazoo.city.org/recycle-it

**The Recycling Partnership**  
SOLVING FOR CIRCULARITY

**KEEP IT LOOSE!**  
MANTENGA LOS MATERIALES RECICLABLES SUELTOS



**KEEP ALL RECYCLING CLEAN, LOOSE, AND DRY**  
MANTENGA TODO EL MATERIAL RECICLADO LIMPIO, SUELTO Y SECO

All residences have access to recycling program. Current contract requires OPT-IN



Current contractor: Republic Services through September 2027.

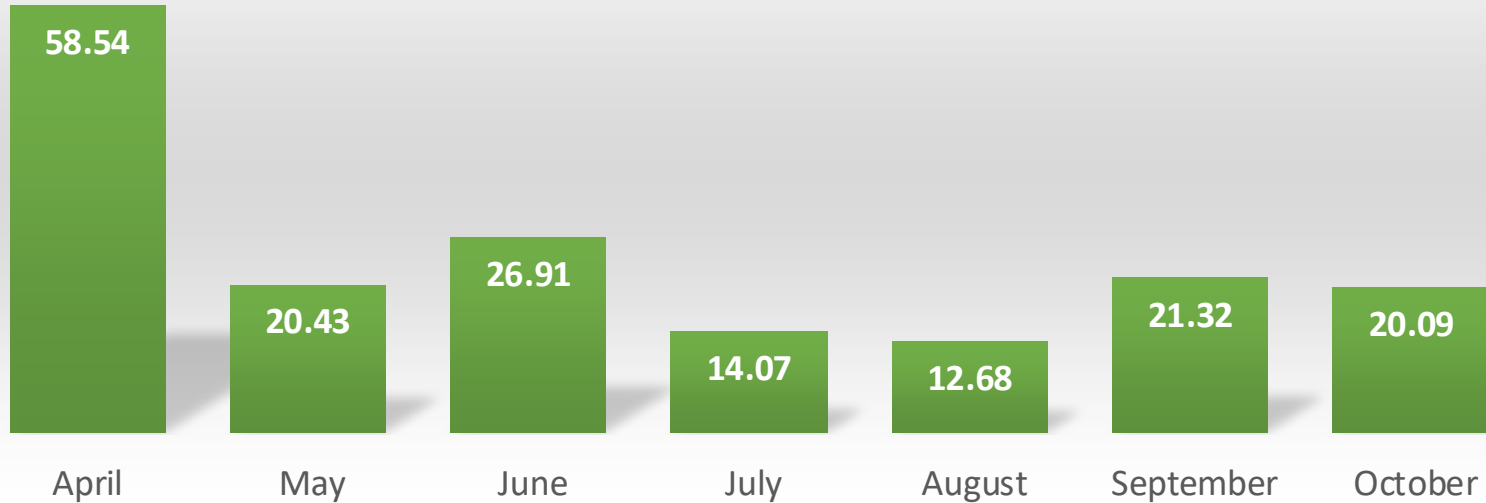
Note: We are in TOP TIER of # CARTS

- Truck 2439 Camera System:**
- Reduced Contamination incidents 54%
  - Increased Participation (Set Outs) 20%
  - 1,341 Feedback Mailers Sent Out
  - Delivered 494 NEW CARTS to SF Households in 2025

311 or 269-337-8000  
kalamazoo.city.org/recycle-it

# Curbside Brush Collection Program Single Family & Multi Unit Residences

Brush Collection Tons by Month

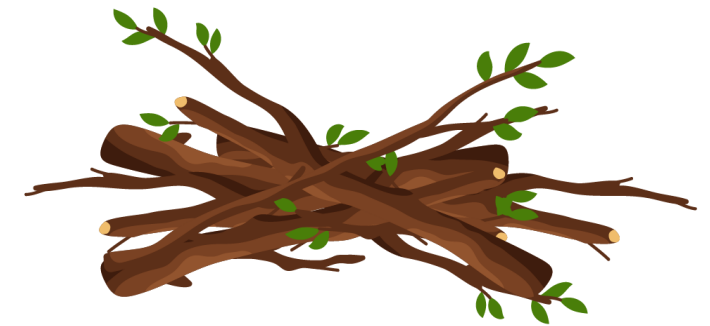


## Program runs April through October

*Materials must be bagged, boxed, or bundled. Bags must be biodegradable. Up to 7.5 cubic yards per collection.*

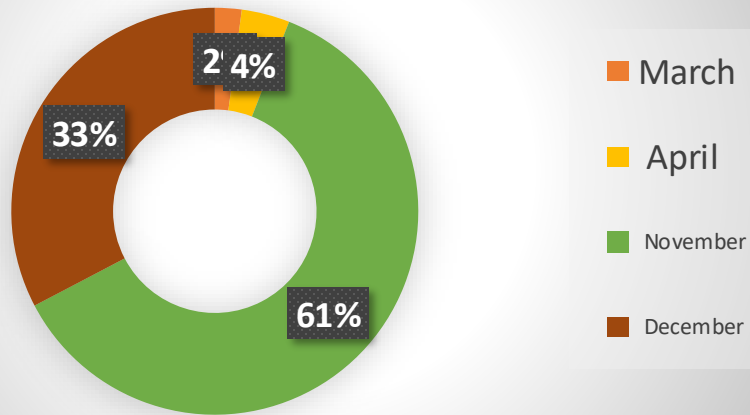
**164.04** Total in 2025

**Up 6.41%** from 2024



**\*May, June, July 2025 services effected by Storm Clean Up issued May 2025**

## Leaf Collection Cubic Yards



We will continue to operate Leaf Collections throughout Spring 2026 to complete second collections.

Snow events and road clearing took priority and in combination with mid-week holidays & connected PTO we are still working this program.

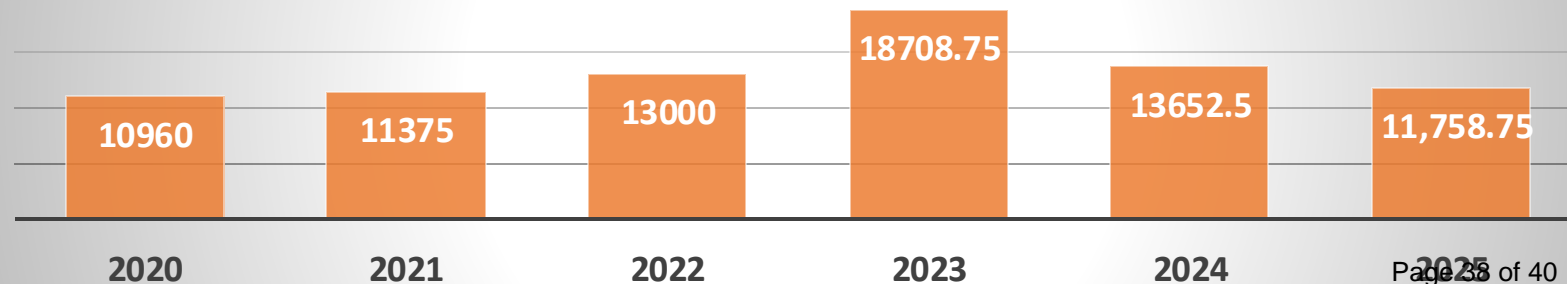
**11,758.75**  
 Total Cubic Yards Collected  
 in 2025

**27 Days of Operation**  
 November, December

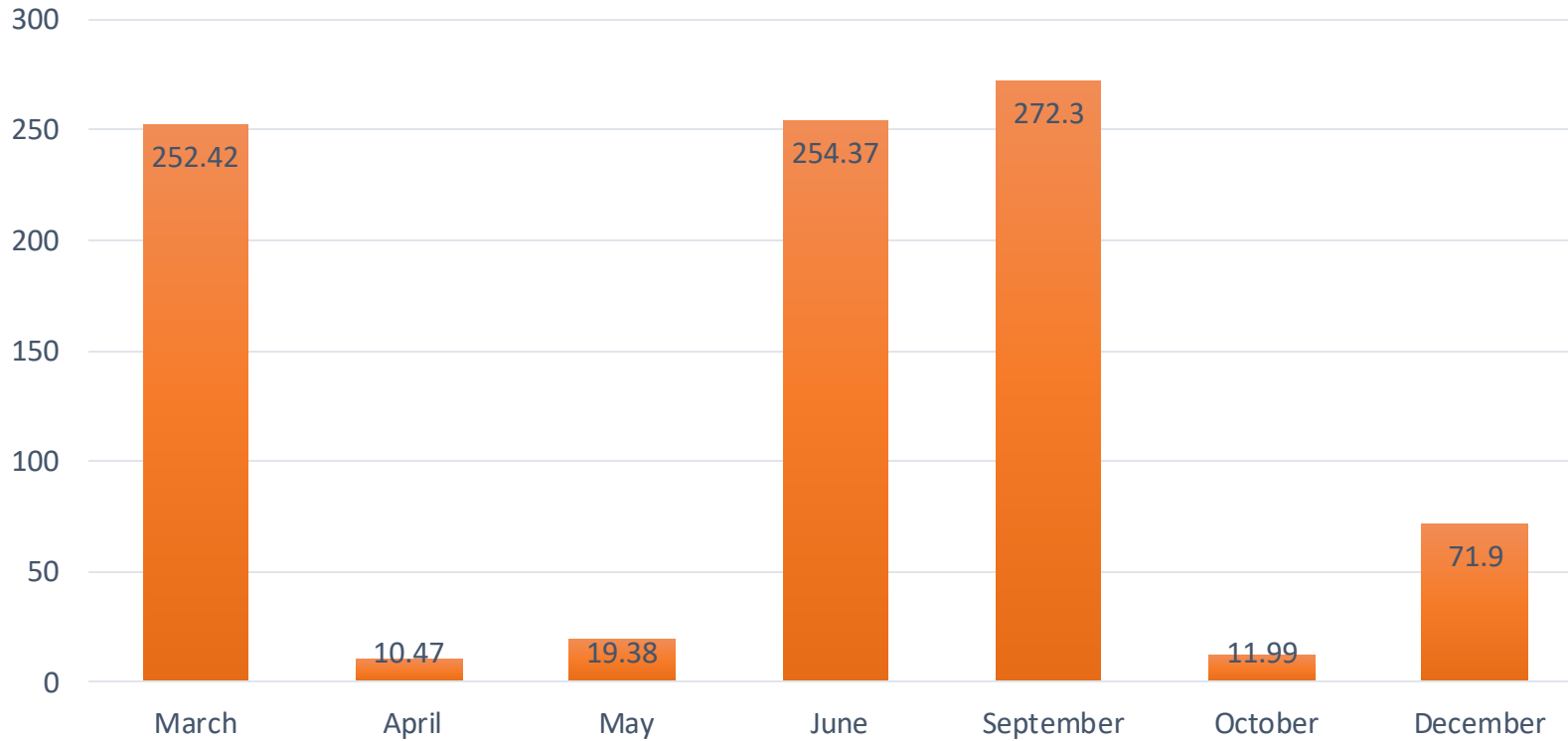
**712 "Miss" Status Reports**  
 337 Nov, 375 Dec



## Yearly Comparison Cubic Yards



### Bulk Trash Tons Quarterly



**2025: 892.83 tons**  
**2024: 937.94 tons**  
**2023: 879.53 tons**



**892.83 Total Tons Sent to Landfill 2025**

